



LONGER LIFE. LOWER COST.

Wheel Loader Repair Options

CATERPILLAR MODELS 950 - 980



ENGINE



POWERTRAIN

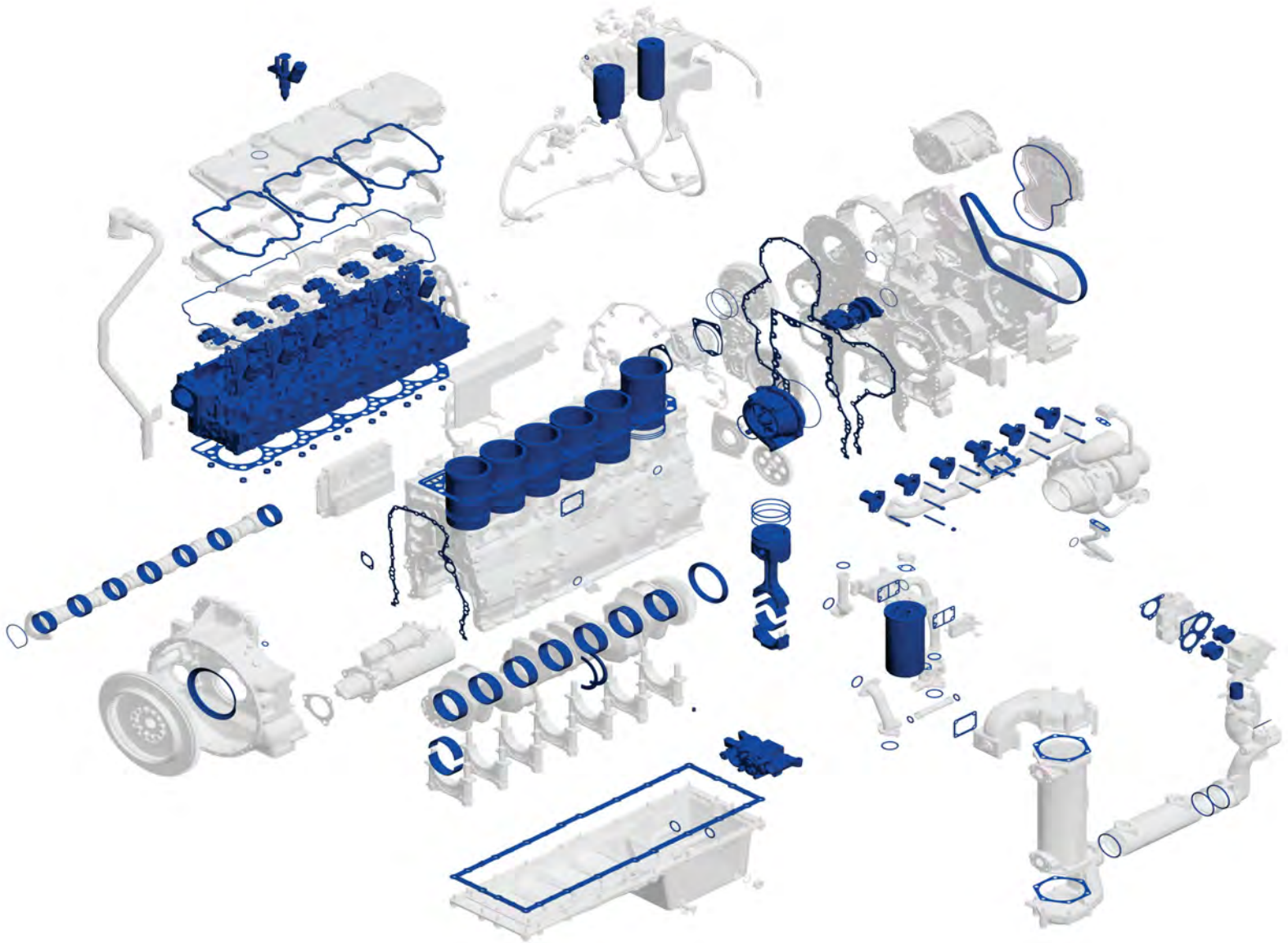
FOLEY



PISCATAWAY (732) 885-5555
BENSALEM (877) 726-7663

www.foleyinc.com

LEVEL 2: DEALER REPOWER



DEALER REPOWER INCLUDES:

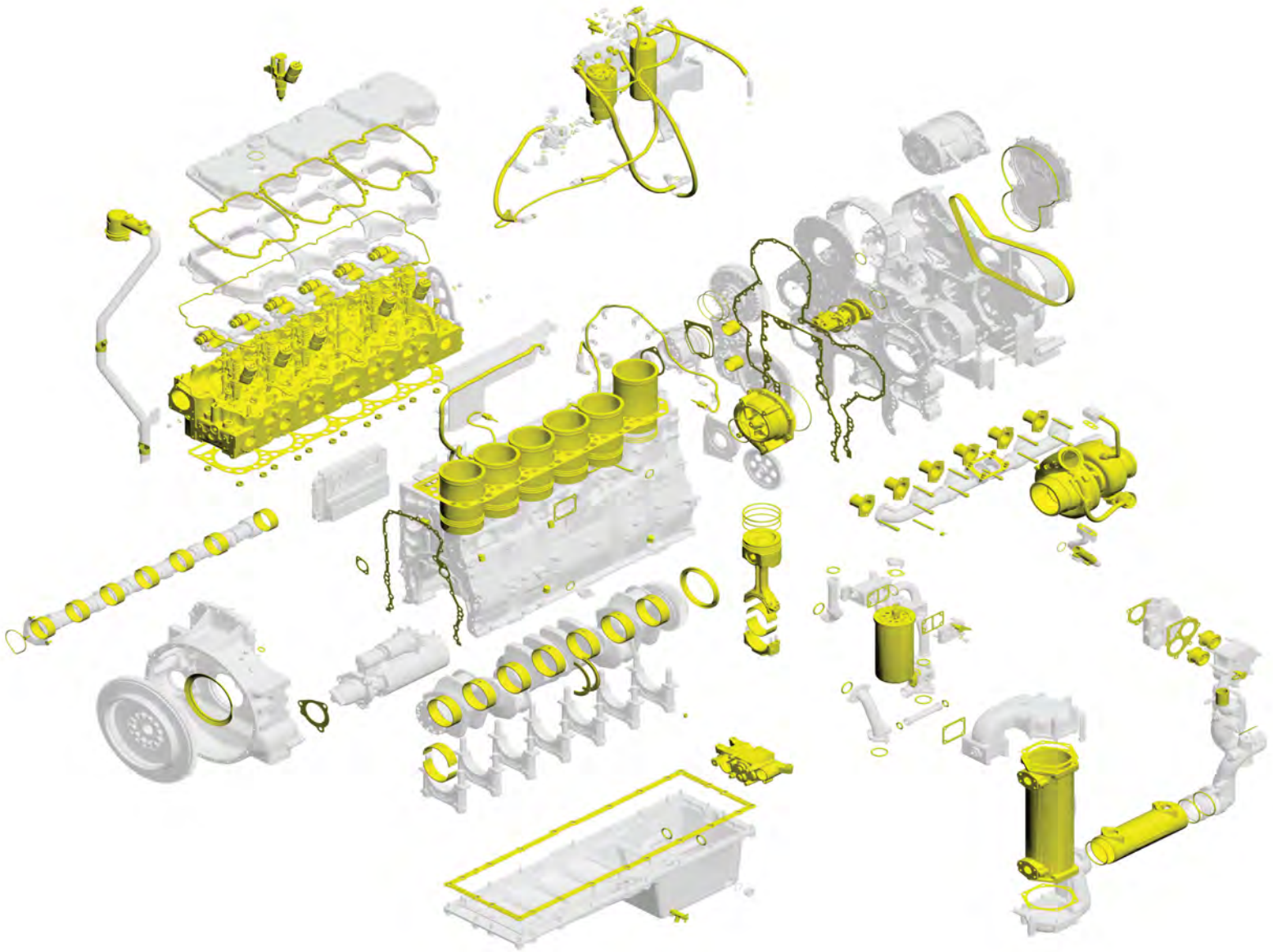
NEW PARTS INSTALLED

- Camshaft Bearings
- Coolant Temperature Regulator
- Crankshaft Thrust Plates
- Exhaust Manifold Studs/Locknuts & Exhaust Sleeves
- Freeze Plugs
- Gaskets & Seals
- Main Bearings & Rod Bearings
- Turbocharger (Mounting) Studs/Locknuts
- Reman Head
- Reman Cylinder Pack Assemblies
- Reman Water Pump
- Reman Oil Pump
- Reman Fuel Injectors
- New Serpentine Belt
- New Oil & Fuel Filters
- New Air Filters **When Ransome Performs R&I*

INSPECT OR TEST

- Camshaft
- Starter and Alternator
- Cooling System
 - Cooling fan
 - Radiator
 - Coolant hoses
 - Water Pump
- Crankshaft
- Cylinder Block
- Engine Mounts
- Engine Oil Cooler
- Engine Oil Pump
- Exhaust & Intake Manifolds
- Fan Drive, Pulleys, Belts & Belt Tensioner
- Flywheel & Ring Gear
- Front Gear Train
- Evaluate Fuel Lines
- Fumes Disposal & Clamps
- Liner Protrusion & Condition
- Piston Jet Sprays
- Rocker Arm Assemblies
 - Intake & Exhaust
 - Rocker Arm Shaft
- Turbocharger, Aftercooler Hoses & Clamps
- Valve Springs, Intake Values, Seats & Guides
- Vibration Damper

LEVEL 3: DEALER REBUILD



DEALER REBUILD INCLUDES:

NEW PARTS INSTALLED

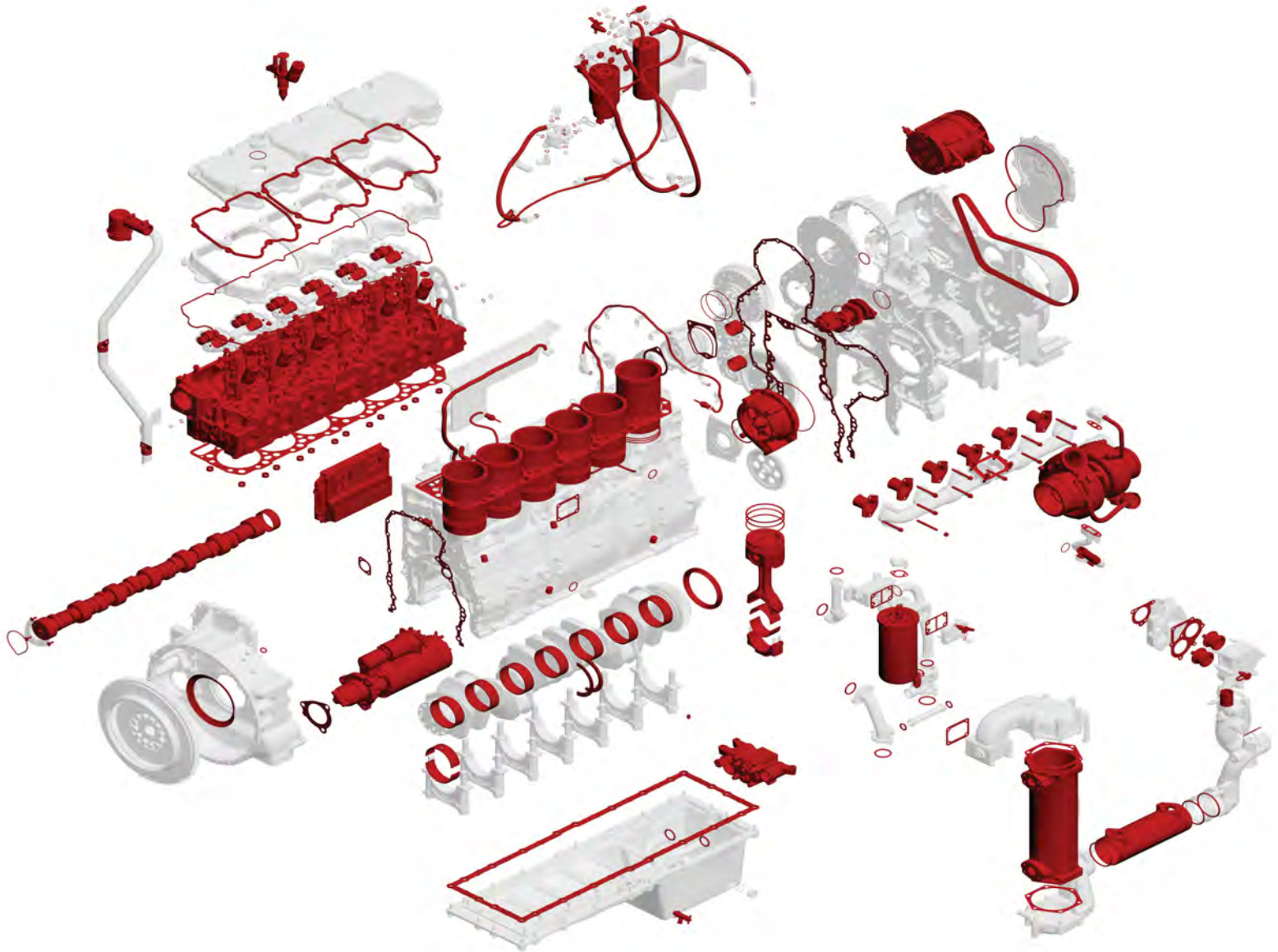
- Camshaft Bearings
- Coolant Temperature Regulator
- Crankshaft Thrust Plates
- Exhaust Manifold Studs/Locknuts & Exhaust Sleeves
- Freeze Plugs
- Gaskets & Seals
- Main Bearings & Rod Bearings
- Turbocharger (Mounting) Studs/Locknuts
- Reman Head
- Reman Cylinder Pack Assemblies
- Reman Water Pump

- Reman Fuel Injectors
- New Serpentine Belt
- New Oil & Fuel Filters
- New Air Filters
- **When Ransome Performs R&I*
- New Fuel Lines
- Reman Turbo
- New Wiring Harness, Switches & Sensors
- Reman Engine & Transmission Oil Coolers
- New Oil Breather
- New Piston Cooling Jets
- New Bushings for Front Gear

INSPECT OR TEST

- Camshaft
- Starter and Alternator
- Crankshaft
- Cylinder Block
- Engine Mounts
- Engine Oil Cooler
- Engine Oil Pump
- Exhaust & Intake Manifolds
- Fan Drive, Pulleys, Belts & Belt Tensioner
- Flywheel & Ring Gear
- Front Gear Train
- Fumes Disposal & Clamps
- Liner Protrusion & Condition
- Rocker Arm Assemblies & Shafts
- Vibration Damper
- Heat Shields, Wraps & Sound Suppression

LEVEL 4: CAT CERTIFIED REBUILD



CPT REBUILD INCLUDES:

NEW PARTS INSTALLED

- Camshaft Bearings
- Coolant Temperature Regulator
- Crankshaft Thrust Plates
- Exhaust Manifold Studs/Locknuts & Exhaust Sleeves
- Freeze Plugs
- Gaskets & Seals
- Main Bearings & Rod Bearings
- Turbocharger (Mounting) Studs/Locknuts
- Reman Head
- Reman Cylinder Pack Assemblies
- Reman Water Pump
- Reman Oil Pump
- Reman Fuel Injectors

- New Serpentine Belt
- New Oil & Fuel Filters
- New Air Filters
- **When Ransome Performs R&I*
- New Fuel Lines
- Reman Turbo
- New Wiring Harness, Switches & Sensors
- Reman Engine & Transmission Oil Coolers
- New Oil Breather
- New Piston Cooling Jets
- New Bushings for Front Gear
- Camshaft
- Starter and Alternator
- Electronic Control Module
- Updates As Caterpillar Requires

INSPECT OR TEST

- Coolant Hoses
- Crankshaft
- Cylinder Block
- Engine Mounts
- Exhaust & Intake Manifolds
- Fan Drive, Pulleys, Belts & Belt Tensioner
- Flywheel & Ring Gear
- Front Gear Train
- Fumes Disposal & Clamps
- Liner Protrusion & Condition
- Rocker Arm Assemblies & Shafts
- Aftercooler
- Vibration Damper
- Heat Shields, Wraps, & Sound Suppression

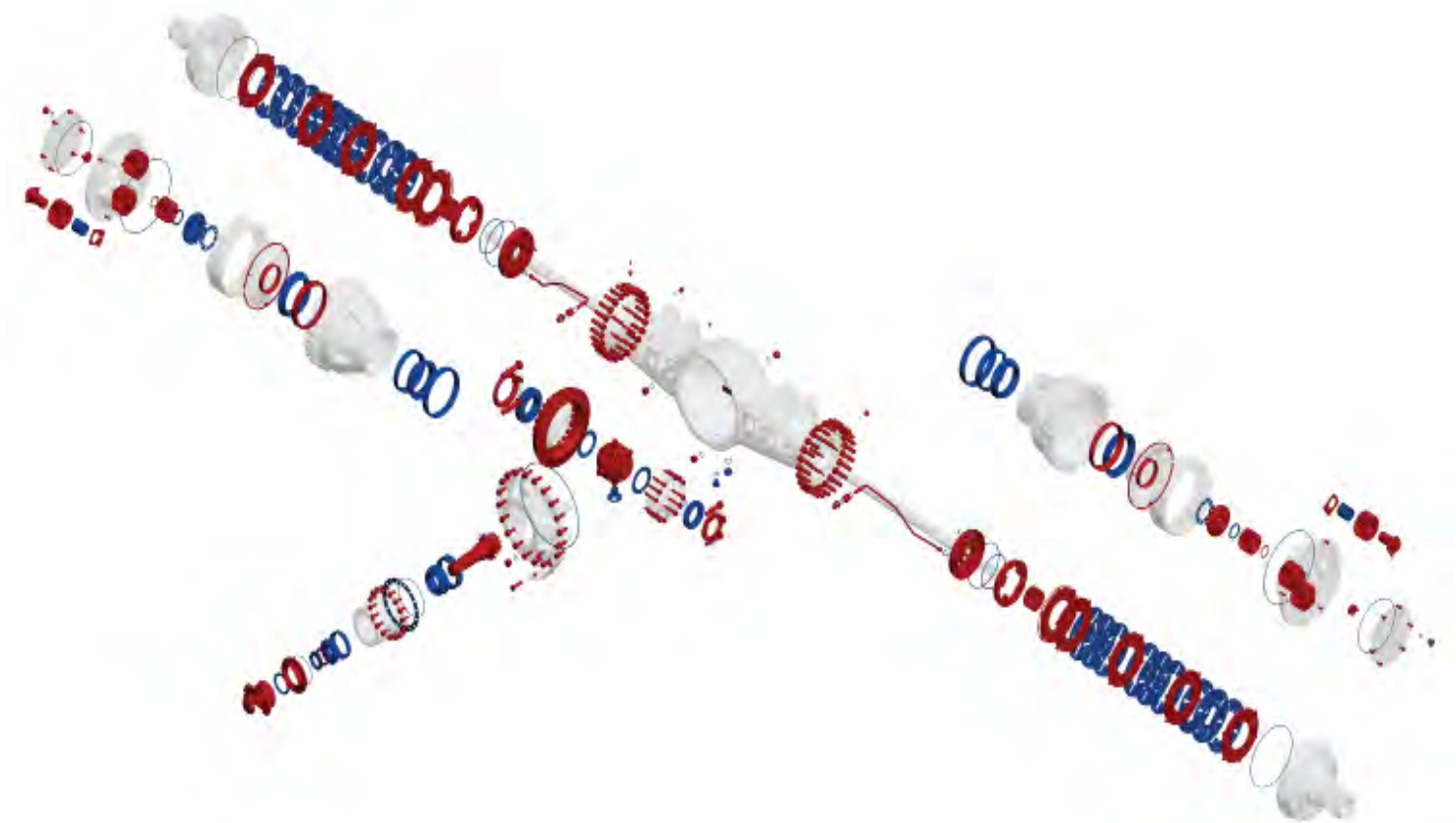
Wheel Loader Engine Repair Options

Level to Level Comparison



REBUILD INCLUSIONS	Level 2	Level 3	Level 4
Dyno Testing of Your Engine	X	X	X
Fresh Coat of Caterpillar Yellow Paint Applied to Engine	X	X	X
12 Months Parts & Labor Coverage	X	X	X
18 Month/1,800 Hour Warranty With SOS Testing		X	
24 Month/4,000 Hour Warranty With SOS Testing			X
Camshaft Bearings	X	X	X
Coolant Temperature Regulator	X	X	X
Crankshaft Thrust Plates	X	X	X
Exhaust Manifold Studs/Locknuts & Exhaust Sleeves	X	X	X
Freeze Plugs	X	X	X
Gaskets and Seals	X	X	X
Main Bearing & Rod Bearings	X	X	X
Turbocharger (Mounting) Studs/Locknuts	X	X	X
Reman Head	X	X	X
Reman Cylinder Pack Assemblies	X	X	X
Reman Water Pump	X	X	X
Reman Oil Pump	X	X	X
Reman Fuel Injectors	X	X	X
New Serpentine Belt	X	X	X
Filters	X	X	X
Air Filters *If R&I is Performed by Ransome	X	X	X
New Fuel Lines		X	X
Reman Turbo		X	X
New Wiring Harness, Switches & Sensors		X	X
Reman Engine & Transmission Oil Coolers		X	X
Reman Oil Breather		X	X
New Piston Cooling Jets		X	X
New Bushing for Front Gear		X	X
Camshaft			X
Starter & Alternator			X
Electronic Control Module			X
Updates per Caterpillar Requirements			X

WHEEL LOADER FRONT AXLE



LEVEL 1: Re-Bearing/Reseal

LEVEL 2: Certified Powertrain Rebuild

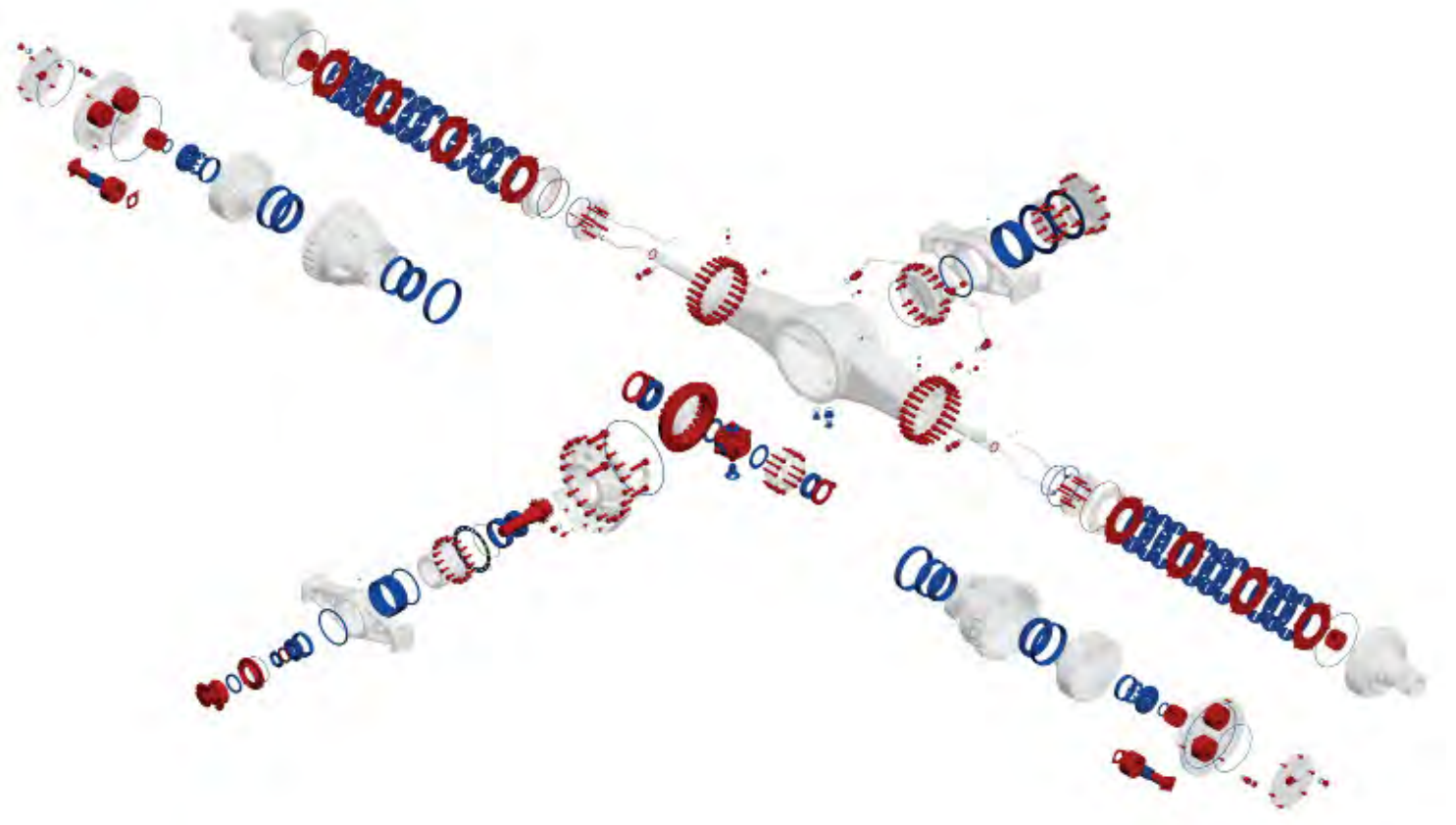
INCLUDES

PARTS REPLACED	Level 1	Level 2
All Bearings and Races	X	X
All Seals and Gaskets	X	X
Set Pinion Depth and Bearing Preload to Caterpillar Specifications	X	X
Paint Component	X	X
All Brake Discs and Plates Replaced That Do Not Meet Cat Reuse Guidelines	X	X
Brake Disc Pressure Plates		X
All Items Highlighted in Red Will Be Reconditioned or Replaced if They Do Not Meet Cat Reuse Guidelines. This Includes Any Machining That May Be Required to Highlighted Parts		X

INSPECT OR TEST

- Inspect for Applicable Updates
- Measure All Bearing Bores
- Break Friction Disc and Plate Inspected Compared to Cat Reuse Guidelines
- All Internal Components Inspected Compared to Cat Reuse Guidelines
- Perform Additional Crack Check on:
 - Spindles
 - Wheels
- Pressure Test Breaks
- Check for Rotational and Differential Lock Function if Applicable

WHEEL LOADER REAR AXLE



■ LEVEL 1: Re-Bearing/Reseal

■ LEVEL 2: Certified Powertrain Rebuild

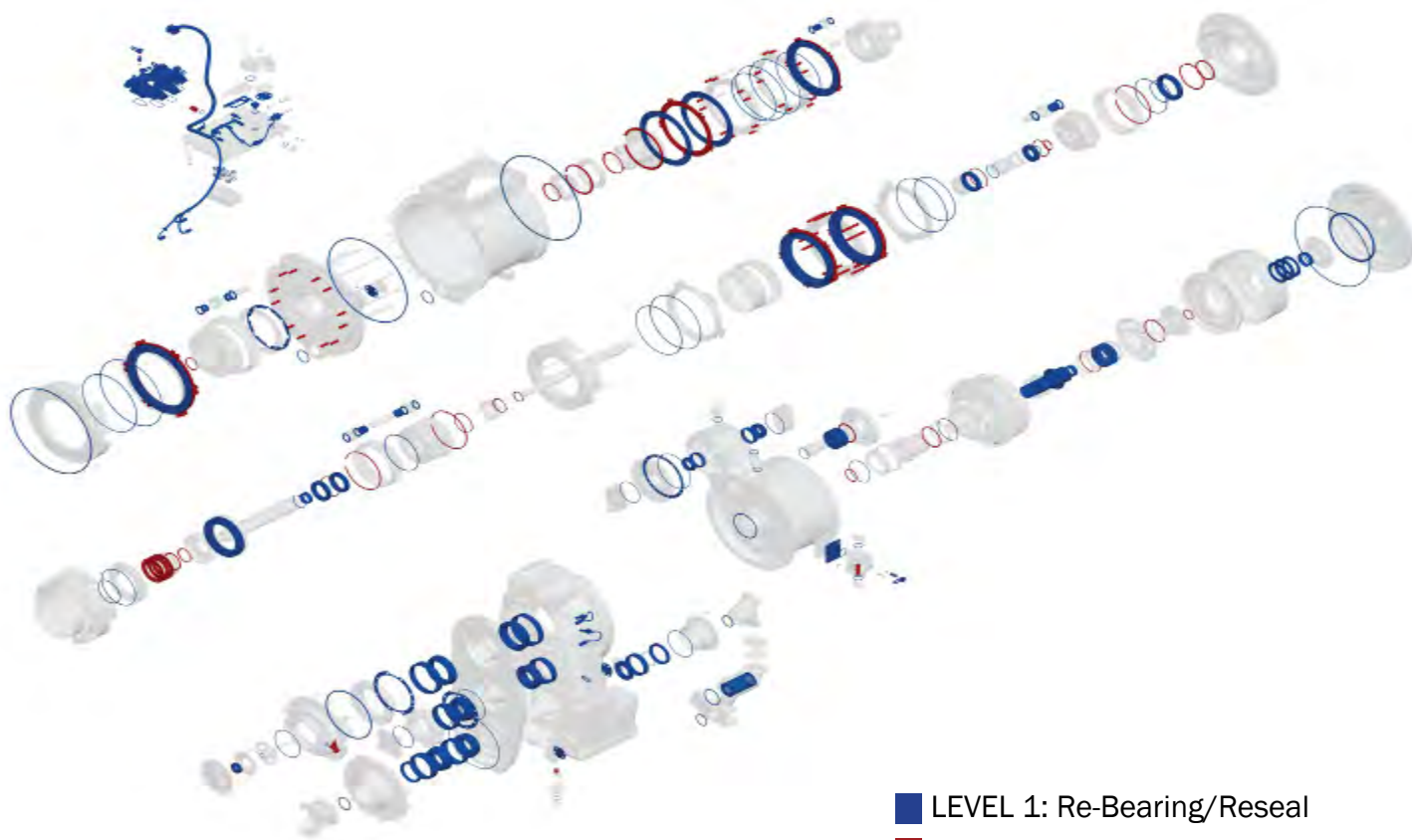
INCLUDES

PARTS REPLACED	Level 1	Level 2
All Bearings and Races	X	X
All Seals and Gaskets	X	X
Set Pinion Depth and Bearing Preload to Caterpillar Specifications	X	X
Paint Component	X	X
All Brake Discs and Plates Replaced That Do Not Meet Cat Reuse Guidelines	X	X
Brake Disc Pressure Plates		X
All Items Highlighted in Red Will Be Reconditioned or Replaced if They Do Not Meet Cat Reuse Guidelines. This Includes Any Machining That May Be Required to Highlighted Parts		X

INSPECT OR TEST

- Inspect for Applicable Updates
- Measure All Bearing Bores
- Break Friction Disc and Plate Inspected Compared to Cat Reuse Guidelines
- All Internal Components Inspected Compared to Cat Reuse Guidelines
- Perform Additional Crack Check on:
 - Spindles
 - Wheels
- Pressure Test Breaks
- Check for Rotational and Differential Lock Function if Applicable

TRANSMISSION/TORQUE CONVERTER



- LEVEL 1: Re-Bearing/Reseal
- LEVEL 2: Certified Powertrain Rebuild

INCLUDES

PARTS REPLACED	Level 1	Level 2
All Bearings and Races	X	X
All Seals and Gaskets	X	X
Retrieve Oil Sample to Verify Cleanliness After Rebuild	X	X
Paint Component	X	X
All Sensors and Modulation Valves/Solenoids	X	X
All Clutch Friction Discs That Do Not Meet Reuse	X	X
Integral Wiring Harness	X	X
All Items Highlighted in Red Will Be Reconditioned or Replaced if They Do Not Meet Cat Reuse Guidelines. This Includes Any Machining That May Be Required to Highlighted Parts		X

INSPECT OR TEST

- Inspect for Applicable Updates
- Measure All Bearing Bores
- Clutch Friction Disc and Plates Inspected Compared to Cat Reuse Guidelines
- All Internal Components Inspected Compared to Cat Reuse Guidelines
- Perform Additional Crack Check on Transfer Gears and Shaft in Transmission Drop Box
- Visually Inspect Harness, Hoses Test Lines, and Sensors
- Air Check and Dye Check Control Valve for Leakage and Internal Cracks
- Hydraulically Bench Test Control Valves to Adjust Pressures to Cat Specifications
- Dyno Test Transmission to Ensure Clutch Actuation Pressure and Valve Modulation are within Specifications

➤ REPAIR OPTIONS CUSTOMER BENEFITS

1. Delivery Same-As-New Performance, Reliability And Warranty.

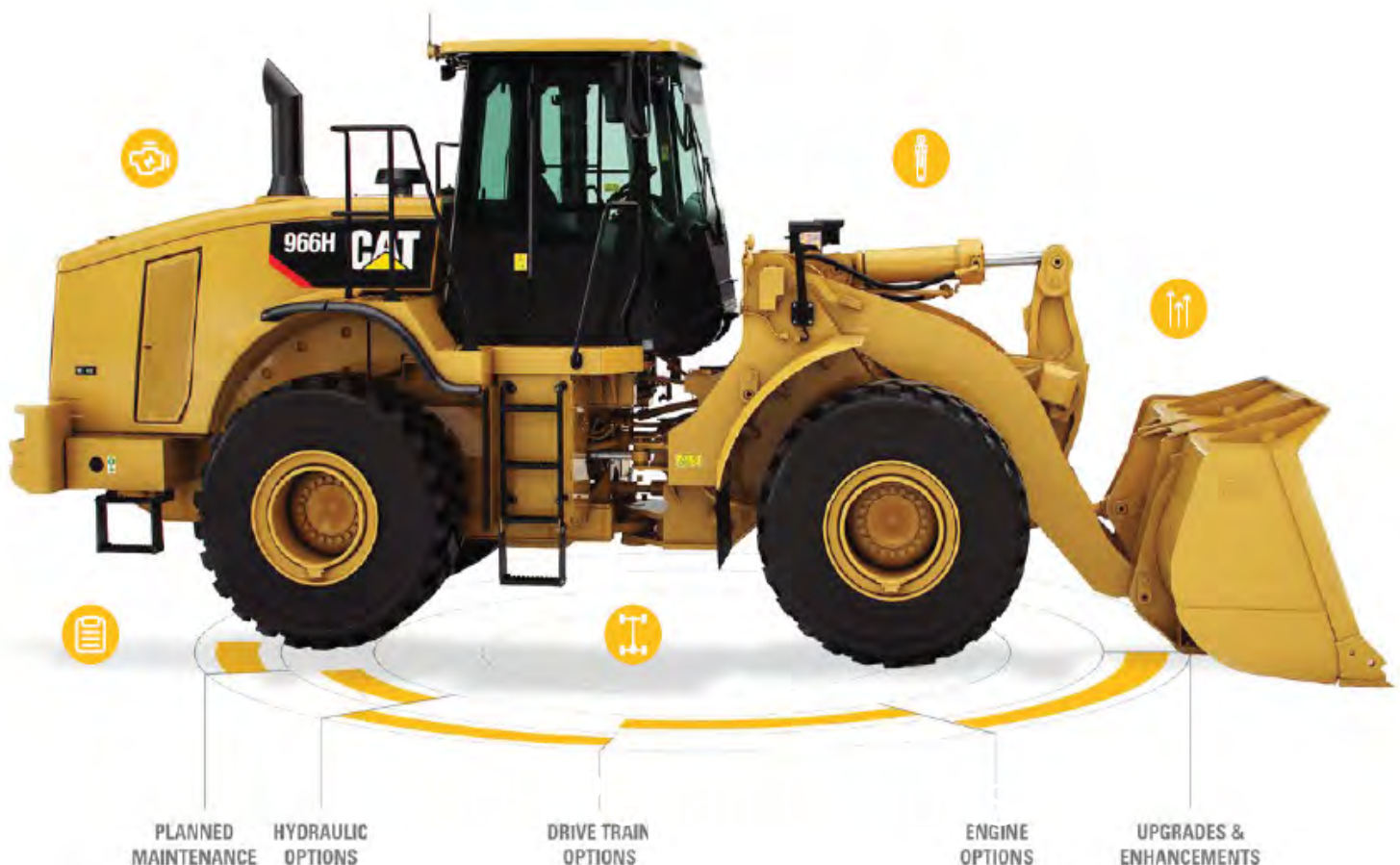
Caterpillar engines and components are built to be remanufactured for a second life.

2. Enhanced Affordability.

At 45% to 75% of the cost of new Caterpillar parts, reman parts contribute to achieving the lowest total owning and operating costs.

3. Increased Over-The-Counter Availability.

That means more options at repair and overhaul time, reducing downtime.



WE ARE **WHERE YOU ARE.**



With 5 branches, a Used Equipment Center and more than 20 parts drops, Foley covers the entire state of New Jersey, Staten Island, NY, the southeastern part of Pennsylvania and northern Delaware, as well as Bermuda.

Visit www.foleyinc.com for updated news, current specials, and to locate the parts drop closest to you.

