

# VISIONLINK®

DIGITAL FLEET MANAGEMENT SOLUTIONS

## CONNECT TO OPTIMIZE

ACTIONABLE INFORMATION MAKES YOUR CUSTOMERS MORE SUCCESSFUL

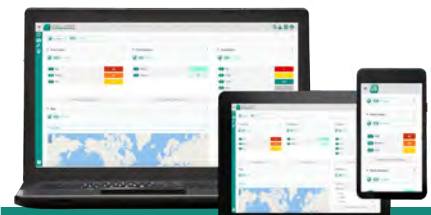
VisionLink® connects customers with a holistic view of their fleet to optimize performance. By gathering and analyzing equipment telematics data from both Cat® and non-Cat assets, it turns data into insights, delivering actionable information customers can use to improve operations and reduce costs.

With both online and mobile access, VisionLink offers four applications for use by different segments of customers' construction businesses:



### UNIFIED FLEET

- » Asset Management
- » Machine Hours & Location
- » Idle Time vs. Operating Time
- » Asset Operation
- » Fuel Usage



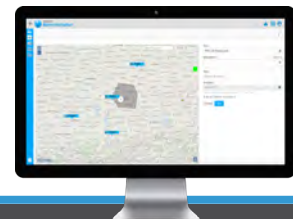
### UNIFIED SERVICE

- » Maintenance & Service Management
- » Equipment Fault Codes
- » Fluid Sampling & Cat Inspect Results
- » Service & Maintenance Scheduling



### UNIFIED PRODUCTIVITY

- » Utilization
- » Daily Payload Data
- » Daily Cycle Times



### UNIFIED ADMINISTRATOR

- » Business Management
- » Asset Settings, Groups & Users
- » Reporting
- » Project Management



## VISIONLINK SUBSCRIPTIONS

Subscription plans are available with cellular or satellite reporting or both. Information can be delivered daily, hourly or at 10-minute intervals. VisionLink also supports an API data out-feed for customers who want to channel the data directly into their own enterprise resource planning (ERP) systems.

### VISIONLINK DAILY

- » Reporting once per day
- » Basic operational information (hours, location, fuel level and fault codes)
- » Idle time & fuel burn summaries
- » Customize maintenance plans with SOS and Cat Inspect
- » \$5/month/asset DN

**\$5** **month**  
**asset DN**

### CAT ESSENTIALS

- » Hourly reporting or upgrade to 10-minute intervals
- » In-depth operational information
- » Fault codes
- » Engine on/off alerts (with cellular)
- » Hourly updates on daily total asset cycles and payloads moved
- » Detailed asset operation timeline for production optimization
- » Geofence entry/exit notifications
- » \$14/month/asset DN, depending on connectivity and reporting options

**\$14** **month**  
**asset DN**

For a complete VisionLink subscription price list, see page 13 of the [Product Link™ Parts & Service Guide](#).  
Ask your digital consultant for more information about VisionLink and all Cat digital fleet management solutions.

## GET TRAINED AND GET SELLING



[VisionLink Training Videos](#) are available online at [Dealer.Cat.Com](#).



Register for VisionLink training webinars at <https://www.myvisionlink.com/upcoming-training/>.



Consult the [Connectivity Selling Guide](#) for valuable tips on how to promote VisionLink.

PEHJ0678

© 2019 Caterpillar. All Rights Reserved. CAT, CATERPILLAR, LET'S DO THE WORK, their respective logos, "Caterpillar Yellow", the "Power Edge" and Cat "Modern Hex" trade dress as well as corporate and product identity used herein, are trademarks of Caterpillar and may not be used without permission. VisionLink is a trademark of Trimble Navigation Limited, registered in the United States and in other countries.

