

Cat[®] Equipment Protection Plan

Minimize your out-of-pocket expenses



Sample Repair Costs*

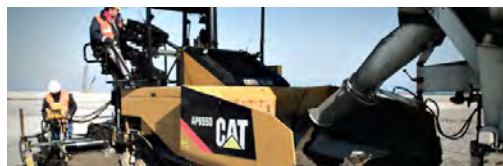
- Final Drive (one side) \$5,355.68
- Fuel Injection Pump \$3,423.43
- Turbocharger \$3,021.05
- Electronic Control Module \$3,055.55
- Injector (4) \$3,230.84

*Sample costs are estimated and include parts and labor.

Let Cat[®] EPP pay for your future repair bills.

CONTROL YOUR COSTS MINIMIZE YOUR RISKS

This plan safeguards your investments in new, used and rebuilt machines beyond the standard warranty period. It includes parts and labor to protect you against covered failures caused by defects in materials and workmanship. With the Powertrain+Hydraulic or Powertrain Equipment Protection Plan, you can increase the predictability of service and maintenance costs—and reduce unplanned downtime.



WHAT WE DO

- Perform necessary inspections to confirm eligibility
- Install parts approved by Caterpillar on covered repairs
- Validate your enrollment in the program



WHAT YOU DO

- Operate equipment according to the Cat[®] Operation & Maintenance Manual (OMM)
- Have recommended preventive maintenance performed at intervals specified in the OMM
- Upon request, provide proof of preventive maintenance compliance (receipts, copies of work orders, invoices)
- Promptly provide the machine for repair in the event of a covered failure



POWERTRAIN

Powertrain components produce, transmit or control engine horsepower for moving the machine. Coverage includes several major powertrain component categories.

COVERED COMPONENTS

Engine & Accessories

- Engine - Internal Components
- Oil Cooler
- Manifolds
- Fan Motor
- Water Pump
- Fuel Injection Pumps
- Injectors
- Lift / Transfer Pump
- Senders / Solenoids / Sensors
- Thermostat
- Flywheel & Torque Converter
- Engine Oil Filter Mount
- Turbocharger
- Electronic Control Modules
- Oil Hoses / Lines (non-hydrostatic)
- Cylinder Block
- Piston
- Piston Rings
- Piston & Connecting Rod
- Crankshaft, Main Bearings & Rod Bearings
- Camshaft & Camshaft Bearings
- Timing / Accessory Gears
- Timing Chain / Belt
- Inlet / Exhaust Valve
- Valve Cover & Base
- Valve Spring & Guide
- Rocker Arm
- Rocker Shaft Assembly
- Push Rod
- Balancer
- Fuel Pump / Governor Drive
- Oil Pump
- Oil Pan Group
- Fan & Fan Drive

Transmission

- Transmissions
- Hydraulic Controls
- Transmission Oil Filter Base
- Transmission Gears
- Final Drives/Planetary
- Drive Shafts
- Transfer Case
- Hydrostatic Pumps & Drive Motors
- Linkage / lines Connected to Hystat Pump
- Drive (pilot/eh) Control Valves
- Bevel and Transfer Case

Drive Line/Drive Axle

- Axles
- Axle Seals
- Final Drive & Wheel
- Final Drive Case / Bore
- Final Drive Chain
- Final Drive Gears
- Axle Shaft
- Drive Axle Oil Pump

Steering

- Steering Clutch
- Steering Clutch & Brake Control Valve

Hydraulic Systems

- Hydraulic Oil Coolers

POWERTRAIN+HYDRAULICS

Coverage includes powertrain and hydraulic components. Powertrain components produce, transmit or control engine horsepower for moving the machine. Hydraulic components are associated with steering and implement control.

COVERED COMPONENTS

Engine & Accessories

- Engine - Internal Components
- Oil Cooler
- Manifolds
- Fan Motor
- Water Pump
- Fuel Injection Pumps
- Injectors
- Lift / Transfer Pump
- Senders / Solenoids / Sensors
- Thermostat
- Flywheel & Torque Converter
- Engine Oil Filter Mount
- Turbocharger
- Electronic Control Modules
- Oil Hoses / Lines (non-hydrostatic)
- Cylinder Block
- Piston
- Piston Rings
- Piston & Connecting Rod
- Crankshaft, Main Bearings & Rod Bearings
- Camshaft & Camshaft Bearings
- Timing / Accessory Gears
- Timing Chain / Belt
- Inlet / Exhaust Valve
- Valve Cover & Base
- Valve Spring & Guide
- Rocker Arm
- Rocker Shaft Assembly
- Push Rod
- Balancer
- Fuel Pump / Governor Drive
- Oil Pump
- Oil Pan Group
- Fan & Fan Drive

Transmission

- Transmissions
- * Transmission Oil Lines
- Hydraulic Controls
- Transmission Oil Filter Base
- Transmission Gears
- Final Drives / Planetary
- Drive Shafts
- Transfer Case
- Hydrostatic Pumps & Drive Motors
- Linkage / lines Connected to Hystat Pump
- Drive (pilot/ eh) Control Valves
- * Powertrain Transmission Lines / Hoses
- * Transmission Oil Tank
- * Drive Train Oil Lines
- Bevel and Transfer Case

Drive Line/Drive Axle

- Axles
- Axle Seals
- Final Drive & Wheel
- Final Drive Case / Bore
- Final Drive Chain
- Final Drive Gears
- Axle Shaft
- Drive Axle Oil Pump
- * Universal Joint

Hydraulic Systems

- * Hydraulic / Steering Hoses & Lines
- * Hydraulic Cylinders
- * Hydraulic Valves & Controls
- * Hydraulic Accumulators
- Hydraulic Oil Coolers
- * Hoses and Lines
- * Hydraulic Quick Couplers & Swivels
- * Hydraulic Oil Filter Mount
- * Hydraulic Oil Temperature Sensor
- * Hydraulic Oil Filter Base
- * Hydraulic Tanks

Steering

- Steering Clutch
- Steering Clutch & Brake Control Valve
- * Steering Gear & Valve

EXCLUSIONS

- If a component is not listed, it may not be included in the plan. Other exclusions include:
- > Improper or abusive use of the machine, Modifications unless approved by Caterpillar
 - > Lubricating oil, antifreeze, filters, consumables and other maintenance items replaced during the covered component repair, unless such items are rendered unusable by a covered component failure
 - > Failures caused by normal wear-out, Any incidental / consequential damages or costs incurred as a result of a covered component failure.
 - > Freight charges for parts shipments, Travel time and mileage involved in getting to a job site, Equipment rental charges
 - > Hauling costs and / or retrieval costs, Overtime labor costs, Downtime loss
 - > Repair costs resulting from the failure of any non-covered components

Examples of covered and excluded components or items are listed here. The actual dealer contract will govern. For a complete list of included components and more information on Cat Equipment Protection Plans, contact your local Cat dealer.

*Difference in Coverage