

Cat[®] Equipment Protection Plan

Minimize your out-of-pocket expenses



Sample Repair Costs*

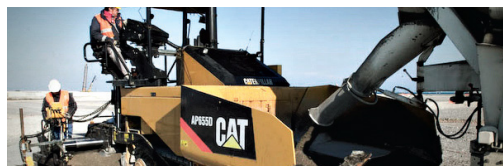
- Final Drive (one side) \$13,820.00
- Fuel Injection Pump \$4,495.00
- Turbocharger \$2,250.00
- Electronic Control Module \$3,865.00
- Injector (4) \$3,380.00
- Hydrostatic Pump \$4,500.00

*Sample costs are estimated and include parts and labor.

Let Cat[®] EPP pay for your future repair bills.

CONTROL YOUR COSTS MINIMIZE YOUR RISKS

This plan safeguards your investments in new, used and rebuilt machines beyond the standard warranty period. It includes parts and labor to protect you against covered failures caused by defects in materials and workmanship. With the Powertrain+Hydraulic or Powertrain Equipment Protection Plan, you can increase the predictability of service and maintenance costs—and reduce unplanned downtime.



WHAT WE DO

- Perform necessary inspections to confirm eligibility
- Install parts approved by Caterpillar on covered repairs
- Validate your enrollment in the program



WHAT YOU DO

- Operate equipment according to the Cat[®] Operation & Maintenance Manual (OMM)
- Have recommended preventive maintenance performed at intervals specified in the OMM
- Upon request, provide proof of preventive maintenance compliance (receipts, copies of work orders, invoices)
- Promptly provide the machine for repair in the event of a covered failure



POWERTRAIN

Powertrain components produce, transmit or control engine horsepower for moving the machine. Coverage includes several major powertrain component categories.

COVERED COMPONENTS

Engine & Accessories

Engine - Internal Components
Oil Cooler
Manifolds
Fan Motor
Water Pump
Fuel Injection Pumps
Injectors
Lift / Transfer Pump
Senders / Solenoids / Sensors
Thermostat
Flywheel & Torque Converter
Engine Oil Filter Mount
Turbocharger
Electronic Control Modules
Oil Hoses / Lines (non-hydrostatic)
Cylinder Block
Piston
Piston Rings
Piston & Connecting Rod
Crankshaft, Main Bearings & Rod Bearings
Camshaft & Camshaft Bearings
Timing / Accessory Gears
Timing Chain / Belt
Inlet / Exhaust Valve
Valve Cover & Base
Valve Spring & Guide
Rocker Arm
Rocker Shaft Assembly
Push Rod
Balancer
Fuel Pump / Governor Drive
Oil Pump
Oil Pan Group
Fan & Fan Drive

Transmission

Transmissions
Hydraulic Controls
Transmission Oil Filter Base
Transmission Gears
Final Drives/Planetary
Drive Shafts
Transfer Case
Hydrostatic Pumps & Drive Motors
Linkage / lines Connected to Hystat Pump
Drive (pilot/eh) Control Valves
Bevel and Transfer Case

Drive Line/Drive Axle

Axles
Axle Seals
Final Drive & Wheel
Final Drive Case / Bore
Final Drive Chain
Final Drive Gears
Axle Shaft
Drive Axle Oil Pump

Steering

Steering Clutch
Steering Clutch & Brake Control Valve

Hydraulic Systems

Hydraulic Oil Coolers

POWERTRAIN+HYDRAULICS

Coverage includes powertrain and hydraulic components. Powertrain components produce, transmit or control engine horsepower for moving the machine. Hydraulic components are associated with steering and implement control.

COVERED COMPONENTS

Engine & Accessories

Engine - Internal Components
Oil Cooler
Manifolds
Fan Motor
Water Pump
Fuel Injection Pumps
Injectors
Lift / Transfer Pump
Senders / Solenoids / Sensors
Thermostat
Flywheel & Torque Converter
Engine Oil Filter Mount
Turbocharger
Electronic Control Modules
Oil Hoses / Lines (non-hydrostatic)
Cylinder Block
Piston
Piston Rings
Piston & Connecting Rod
Crankshaft, Main Bearings & Rod Bearings
Camshaft & Camshaft Bearings
Timing / Accessory Gears
Timing Chain / Belt
Inlet / Exhaust Valve
Valve Cover & Base
Valve Spring & Guide
Rocker Arm
Rocker Shaft Assembly
Push Rod
Balancer
Fuel Pump / Governor Drive
Oil Pump
Oil Pan Group
Fan & Fan Drive

Steering

Steering Clutch
Steering Clutch & Brake Control Valve
* Steering Gear & Valve

Transmission

Transmissions
* Transmission Oil Lines
Hydraulic Controls
Transmission Oil Filter Base
Transmission Gears
Final Drives / Planetary
Drive Shafts
Transfer Case
Hydrostatic Pumps & Drive Motors
Linkage / lines Connected to Hystat Pump
Drive (pilot / eh) Control Valves
* Powertrain Transmission Lines / Hoses
* Transmission Oil Tank
* Drive Train Oil Lines
Bevel and Transfer Case

Drive Line/Drive Axle

Axles
Axle Seals
Final Drive & Wheel
Final Drive Case / Bore
Final Drive Chain
Final Drive Gears
Axle Shaft
Drive Axle Oil Pump
* Universal Joint

Hydraulic Systems

* Hydraulic / Steering Hoses & Lines
* Hydraulic Cylinders
* Hydraulic Valves & Controls
* Hydraulic Accumulators
Hydraulic Oil Coolers
* Hoses and Lines
* Hydraulic Quick Couplers & Swivels
* Hydraulic Oil Filter Mount
* Hydraulic Oil Temperature Sensor
* Hydraulic Oil Filter Base
* Hydraulic Tanks

EXCLUSIONS

If a component is not listed, it may not be included in the plan. Other exclusions include:

- > Improper or abusive use of the machine, Modifications unless approved by Caterpillar
- > Lubricating oil, antifreeze, filters, consumables and other maintenance items replaced during the covered component repair, unless such items are rendered unusable by a covered component failure
- > Failures caused by normal wear-out, Any incidental / consequential damages or costs incurred as a result of a covered component failure.
- > Freight charges for parts shipments, Travel time and mileage involved in getting to a job site, Equipment rental charges
- > Hauling costs and / or retrieval costs, Overtime labor costs, Downtime loss
- > Repair costs resulting from the failure of any non-covered components

Examples of covered and excluded components or items are listed here. The actual dealer contract will govern. For a complete list of included components and more information on Cat Equipment Protection Plans, contact your local Cat dealer.

*Difference in Coverage