

P285

COMMERCIAL PAVER



BUILT FOR HIGH PRODUCTION.

Engineered and built to exceed the demands of commercial paving, the Weiler P285 incorporates proven designs with new innovations to provide performance, reliability and outstanding mat quality in a wide range of applications.



PROVEN SCREED.

The Weiler designed 2,800 lb (1270 kg) screed delivers outstanding mat quality and a wide paving range. The 7' 8" (2.3 m) front mount screed is hydraulically extendable to 15' (4.6 m).



DURABLE COMPONENTS.

Highway class chains, conveyor and auger bearings provide long-term reliability. Remote grease lines located on the front counterweight provides easy daily maintenance.



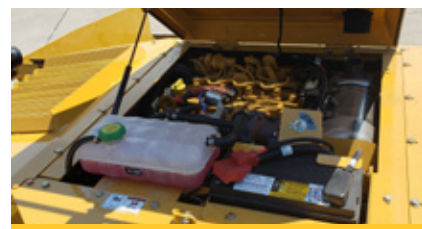
VISIBILITY AND CONTROL.

The P285 has three different operating positions allowing for optimal visibility while the adjustable, magnetic-resistance intelligent steering system allows for reliable control.



POWER TO PUSH.

Cat® C2.8 Tier 4F/Stage V engine with 74 hp (55 kW) powers the 84" (2134 mm) track length undercarriage through a 3-speed hydrostatic drive. 12" (305 mm) performance, poly pads and 125 mm track chain pitch optimize the ride with a 300 fpm (76 mpm) max transport speed.



FAST SERVICE.

Remote grease lines, spray down system with three (3) coiled hoses located on each corner of the paver, five (5) engine access doors and Caterpillar dealer service and support keep your machine up and running with limited machine down time.

P285 SPECIFICATIONS

WEIGHT	18,000 lb	8165 kg	SCREED WEIGHT	2,800 lb	1270 kg	ENGINE	Cat® C2.8 Tier 4F/Stage V
LENGTH	13'	3962 mm	MAIN PLATE WIDTH	16.5"	419 mm	PAVING SPEED	180 fpm 55 mpm
WIDTH	98"	2489 mm	EXTENSION PLATE WIDTH	8"	203 mm	TRANSPORT SPEED	300 fpm 91 mpm
HEIGHT	76"	1930 mm	SCREED HEAT	Electric - 4 elements		FUEL CAPACITY	30 gal 114 L
TRUCK CLEARANCE	19"	483 mm	VIBRATION	2 x 2500 vpm		HYDRAULIC CAPACITY	30 gal 114 L
AUGER DIAMETER	12"	305 mm	AUGER SPEED	Variable, 0-130 rpm			

POWERTRAIN

Cat® C2.8 Tier 4F/Stage V engine with 74 hp (55 kW) and no DEF
3-Speed hydrostatic drive, 300 fpm (91 mpm) transport speed
Automatic track tensioning
84" (2134 mm) track length with 64" (1626 mm) of ground contact
12" (305 mm) performance, poly track pad option
6 rack rollers per side
125 mm track chain pitch
Hydraulically driven 12 kW generator

SCREED

7' 8" (2.3 m) to 15' (4.6 m) standard paving width
Hydraulic tow point adjustment
4 element electric heated screed w/ thermostatic control
3/8" (9.5 mm) thick screed plates
Grade and slope controls
Manual crown adjustment (+/-3%)
Dual folding rear walkways with slide out extensions
Adjustable spring loaded end gates
Heated end gates

OPERATING ENVIRONMENT

Dual operating stations
3 operating positions - high, mid and screed
Push button keypads
Color LCD display provides conditions and diagnostics
Pause mode enables return to same settings
Steering wheel standard, propel levers optional
Optional screed mounted control panels

SERVICE/MAINTENANCE

8-gal (30 L) spray down system with 3 coiled hoses
Braided electrical harnesses and sealed connections
Color-coded electrical wires
12-volt electric system with automotive-type fuses
Remote grease fittings
5 engine access doors
Lockable vandal covers and engine access doors

MATERIAL DELIVERY

9-ton (8.16 mt) hopper
Replaceable floor plates
Heavy-duty chains and flight bars
Reversible augers and conveyors
Dual, under auger cutoff doors
Independent auger and conveyor control with sonic feed sensors
Adjustable push roller

OPTIONAL EQUIPMENT

Steel Track Pads
Additional Operator's Seat Group
Joy Stick Steering Control Group
Hand Held Remote Group
Lower Additional Screed Mounted Control Group
Electric Screed Extension Height Adjustment Group
Power Hydraulic Slope Group
Hydraulic Power Crown Group
Screed Cut-Off Shoe Group
1' Auger Extension Group
12" Integrated Berm Group w/Heated Endgates
1' Bolt-On Extensions w/Heat Group (left and right)

SALES AND SERVICE

Sold and serviced exclusively through Caterpillar dealers worldwide.

WARRANTY

12 months standard. Extended warranty available.