

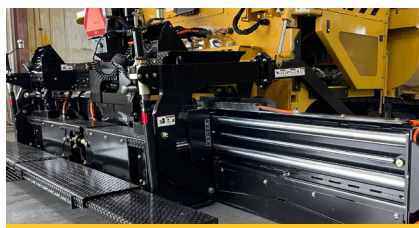
# P385C

COMMERCIAL PAVER



## BUILT FOR HIGH PRODUCTION.

Engineered and built to exceed the demands of commercial paving, the Weiler P385C incorporates proven designs with new innovations to provide performance, reliability and outstanding mat quality in a wide range of applications.



## PROVEN SCREED.

The Weiler designed 3,700 lb (1678 kg) screed delivers outstanding mat quality and a wide paving range. The 8' (2.4m) front mount screed is hydraulically extendable to 15' 8" (4.80 m).



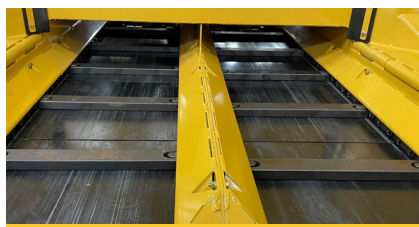
## LARGEST UNDERCARRIAGE.

Best-in-class 90" (2286 mm) track length with 68" (1727 mm) of ground contact and 140 mm track chain pitch provides smooth ride and excellent flotation. Automatic track tensioning ensures performance and maximizes component life.



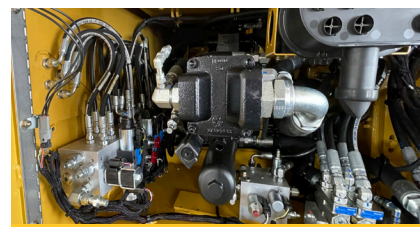
## VISIBILITY AND CONTROL.

The P385C has three different operating positions allowing for optimal visibility while the adjustable, magnetic-resistance intelligent steering system allows for reliable control.



## DURABLE COMPONENTS.

Highway class chains, conveyor and auger bearings provide long-term reliability. Remote grease lines located on the front of the counterweight provide easy daily maintenance.



## FAST SERVICE.

Remote grease lines, spray down system with three coiled hoses and timer, five engine access doors and Caterpillar dealer service and support keep your machine up and running.

# P385C SPECIFICATIONS

<b>WEIGHT</b>	22,000 lb	9979 kg	<b>SCREED WEIGHT</b>	3,700 lb	1678 kg	<b>ENGINE</b>	Cat® C3.6 Tier 4F/Stage V
<b>LENGTH</b>	14' 8"	4470 mm	<b>MAIN PLATE WIDTH</b>	16.5"	419 mm	<b>PAVING SPEED</b>	150 fpm 45 mpm
<b>WIDTH</b>	102"	2591 mm	<b>EXTENSION PLATE WIDTH</b>	9"	228 mm	<b>TRANSPORT SPEED</b>	350 fpm 106 mpm
<b>HEIGHT</b>	76"	1930 mm	<b>SCREED HEAT</b>	Electric - 4 elements		<b>FUEL CAPACITY</b>	40 gal 151 L
<b>TRUCK CLEARANCE</b>	19"	482 mm	<b>VIBRATION</b>	2 x 2500 vpm		<b>HYDRAULIC CAPACITY</b>	30 gal 114 L
<b>AUGER DIAMETER</b>	12"	305 mm	<b>AUGER SPEED</b>	150 rpm - variable		<b>DEF CAPACITY</b>	5 gal 18 L

## POWERTRAIN

Cat® C3.6 Tier 4F/Stage V engine with 120 hp (90 kW)  
3-Speed hydrostatic drive, 350 fpm (106 mpm) transport speed  
Automatic track tensioning  
90" (2,286 mm) track length with 68" (1,727 mm) of ground contact  
14" (356 mm) performance, poly track pads  
6 track rollers per side  
140 mm track chain pitch  
Hydraulically driven 12 kW generator

## OPERATING ENVIRONMENT

Dual operating stations  
3 operating positions - high, mid and screed  
Push button keypads  
LCD display provides conditions and diagnostics  
Pause mode enables return to same settings  
Steering wheel standard, propel levers optional  
Optional screed mounted control panels  
LED strobe and works lights

## MATERIAL DELIVERY

9-ton (8.1 mt) hopper  
Replaceable floor plates  
Heavy-duty chains and flight bars  
Narrow chain guards  
12" (305 mm) Ni-hard augers,  
Adjustable push roller  
Variable speed and reversible augers and conveyors  
Cut-off doors  
Hydraulic tow points

## SALES AND SERVICE

Sold and serviced exclusively through Caterpillar dealers worldwide.

[WWW.WEILERPRODUCTS.COM](http://WWW.WEILERPRODUCTS.COM)

## SCREED

8' (2.44 m) to 15'8" (4.80 m) standard paving width (17' 8" max)  
4 element electric heated screed w/ thermostatic control  
3/8" (9.5 mm) thick screed plates  
Grade and slope controls  
Sonic feed sensors  
Manual crown adjustment (+-3%)  
Folding rear walkways  
Spring loaded end gates w/ heated shoes

## SERVICE/MAINTENANCE

8 gal (30 L) spray down system with 3 hoses/nozzles  
Braided electrical harnesses and sealed connections  
12-volt electric system with automotive-type fuses  
Remote grease fittings  
5 engine access doors  
Lockable vandal covers and engine access doors

## OPTIONAL EQUIPMENT

Truck hitch  
Hydraulically extendable push rollers  
Umbrella  
Additional operator seat  
Second Steering Indicator Group  
Propel levers  
DC LED blade lights  
Screed mounted control panels  
Hand held remote  
Auto grade and slope controls  
Electric screed extension height adjustment  
Power hydraulic slope  
Hydraulic power crown  
Cut-off shoes  
12" (305 mm), 18" (457 mm), 24" (610 mm) bolt- on berm attachment  
12" and 18" hydraulic integrated berm  
Auger & tunnel extensions  
1' heated bold-on screed extensions

## WARRANTY

12 months standard. Extended warranty available.